





## Arjun Group

Established in 1990, Arjun Group has been a trailblazer in infrastructure development, dedicated to offering exceptional residential homes. With a legacy of trust and excellence, we have become the preferred choice for over 6000 families, turning their dream homes into reality.

Over the past 33+ years, Arjun Group has successfully developed and completed more than 35 landmark projects, each contributing positively to the community and cementing our reputation for quality and reliability.

At Arjun Group, we uphold the highest standards of quality assurance, strength, and reliability. Our commitment to luxury is seamlessly blended with innovative and cutting-edge designs, ensuring that every home we create stands apart in terms of elegance and functionality.

Our use of cutting-edge technologies and understanding of our customers' needs allows us to set the benchmark for luxury homes. Arjun Group is not just about building homes; it's about creating spaces where memories are made and cherished.

Join us in our journey as we continue to build with passion and deliver with pride.



evergreen **Lifestyle**  
that combines **Comforts** and **Happiness**



The Only residence project.

 Arjun  
**PEARL**

Prime Location  
Premium Lifestyle  
Reputed Brand  
Elegant Towers

**Specially TAILORED For You!**

You've come across many homes, big and small, simple and extravagant, beautiful and practical, by the countryside and on the roadside. But here's a home that satisfies the criteria you have set for your dream home.

**3 BHK**  
Morden Apartments



# The Personal SPACE You've Always Longed For



Own foyer for each unit



Well-equipped Gymnasium



Walking Track



Toddler Play Area for Kids



Clubhouse with Indoor games



Landscaped garden  
to sit, relax and go back in time



Senior Citizen Sitting



Full Basement + Partial Gr. Floor  
Parking



24 hours water supply



CCTV camera's security

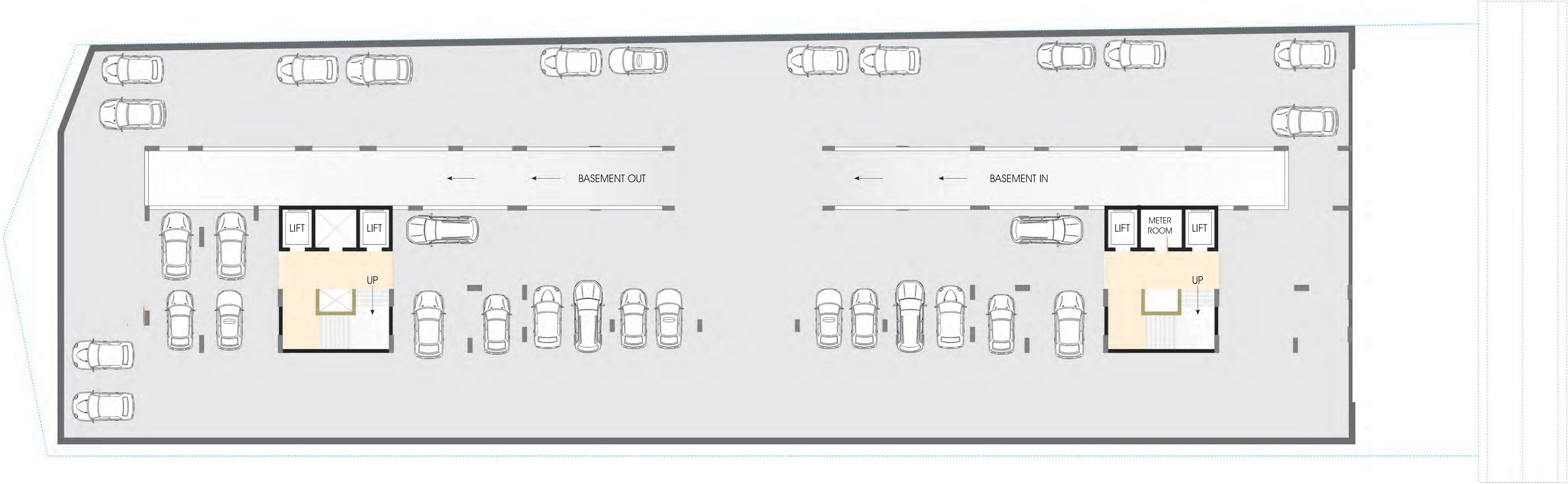


Fire Safety

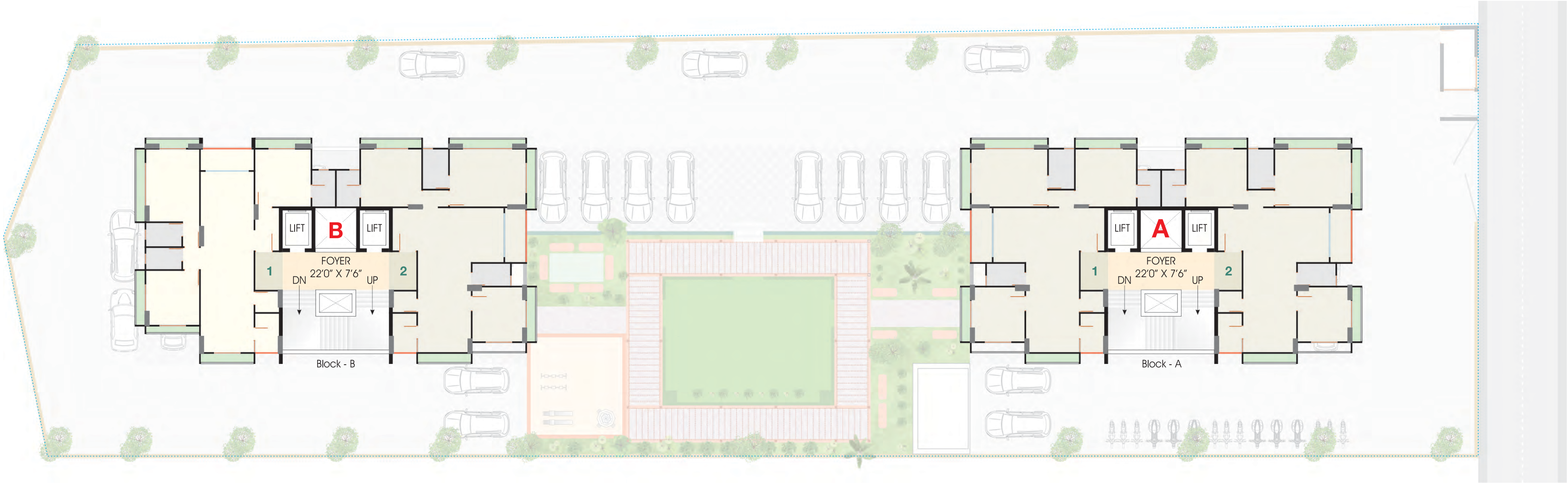
# Ground Floor Plan



# Basement Floor Plan

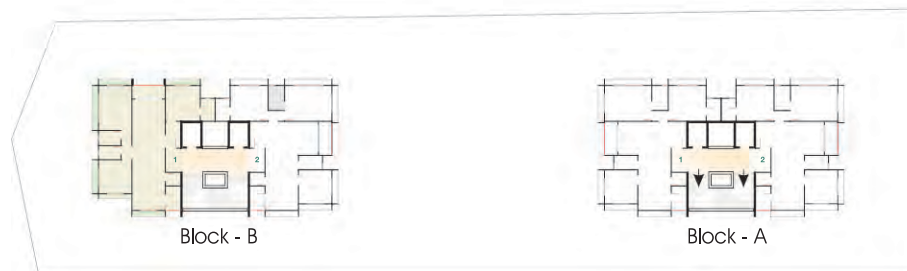


# Typical Floor Plan



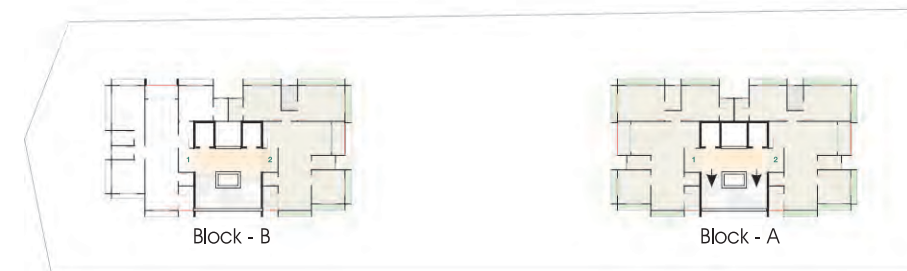
# Unit plan -1

3 BHK apartments



# Unit plan -2

3 BHK apartments







# Arjun PEARL

## SPECIFICATION

### Structure:-

- Earthquake resistant R.C.C framed structure with brick/AAC block masonry work.

### Plaster:-

- Polymer textured external walls with premium acrylic paint.
- Single coat mala plaster internal wall with white cement based putty.

### Flooring:-

- Branded vitrified tiles flooring in the entire apartment.
- Rough Kota stone / RCC block paving in parking area.

### Kitchen:-

- Premium quality polished granite or equivalent on platform, S.S sink & branded vitrified tiles cladding up to lintel Level

### Bathrooms:-

- Designer glazed tiles up to lintel level.
- Premium quality brand C.P. Brass Fittings.

### Common Areas:-

- Stone finished staircase
- Extravagant foyer

### Doors & Windows :-

- Decorative polished veneer main entrance door with branded locking system.
- Wooden frame with premium quality flush door
- Premium Aluminum powder coted / anodized section with glass for all windows

### Electrification:-

- Three phase concealed electric copper cabling with ample electric points.
- Premium quality modular switches.
- Provision for DTH and Internet connectivity.

### Plumbing:-

- 24 x 7 water supply
- Premium quality sanitary ware & fitting in all toilets
- High-quality concealed plumbing lines.

### Lift:-

- High speed automatic two elevators for each block

### Security:-

- CCTV cameras.





Developer



HOME BEYOND YOUR IMAGINATION

[www.thearjungroup.com](http://www.thearjungroup.com)



-: Site Address :-

Opp. Five Petals, Opp. Arjun Avenue,  
Ghatlodia, Ahmedabad-380061

| +91 87994 49153 | [rudraainfra9153@gmail.com](mailto:rudraainfra9153@gmail.com) |

Architect  
'SARANSH'

Structural Engineer  
UMANG PATEL

**Disclaimer:** All stamp duty, Registration Charges, Legal Documentation Charges, GST, AMC & TORRENT POWER Charges including cable & substation costs shall be borne by the purchaser. | Any Additional charges or duties levied by the Government / Local authorities during or after the completion of the scheme will be borne by the purchaser. | In the interest of continual development in the design & quality of construction, the developer reserve all rights to make any changes in the scheme including and not limited to technical specification, design, and planning layout & all purchasers shall abide by such changes. | Changes / alterations of any nature including elevation, exterior colour, scheme, balcony grill, or any other changes affection the overall design concept & outlook of the scheme are strictly NOT PERMITTED during or after the completion of the scheme. | Any RCC member ( Beam, Column, Slab) must not be damaged during your interior work. | This brochure is intended only to convey the essential design & technical features of the scheme and does not form part of legal documents,

Rera No. : PR/GJ/AHMEDABAD/AHMEDABAD CITY/Ahmedabad Municipal Corporation/RAA13716/250624/311226

Website : [www.gujrerarl.gujarat.gujarat.gov.in](http://www.gujrerarl.gujarat.gujarat.gov.in)